

Opale Smartphone Supervizer (OSS)

OSS is the Opale brand-new Android application that fully leverages the capabilities of the Android SDK to provide deeper insights into wireless connections.

With the growing demand for mobility, visibility into mobile performance has become essential. When mobile tests produce unexpected results, it is critical to understand the underlying test conditions to properly analyze outcomes.

OSS is a node, part of the MultiDSL solution, enabling automated speech call control and speech quality measurements on Android Mobile phones, while also providing signal strength and location information during calls.

OSS manages the entire call process—from setup to termination—and delivers real-time statistics and connection status updates at one-second intervals directly to the MultiDSL controller.

Additionally, a dedicated user interface on the mobile device provides live access to connection status information, allowing immediate insight into current network conditions.

A User Interface, in the mobile, will give access, in live, to connection status.

Requisites

- Android version 8.0.0 Oreo (Level 26) and above required.
- OSS is only available with MultiDSL 7

Product N°	Model	Description
000197	OSS	Opale Smartphone Supervisor (new setups)
000198	SC UPG	Upgrade from SC to OSS (SC customers)

Key points

Wifi

Get WiFi connection information and identify when Roaming is performed, monitor traffic stats within a MultiDSL test.

From GSM to 5G

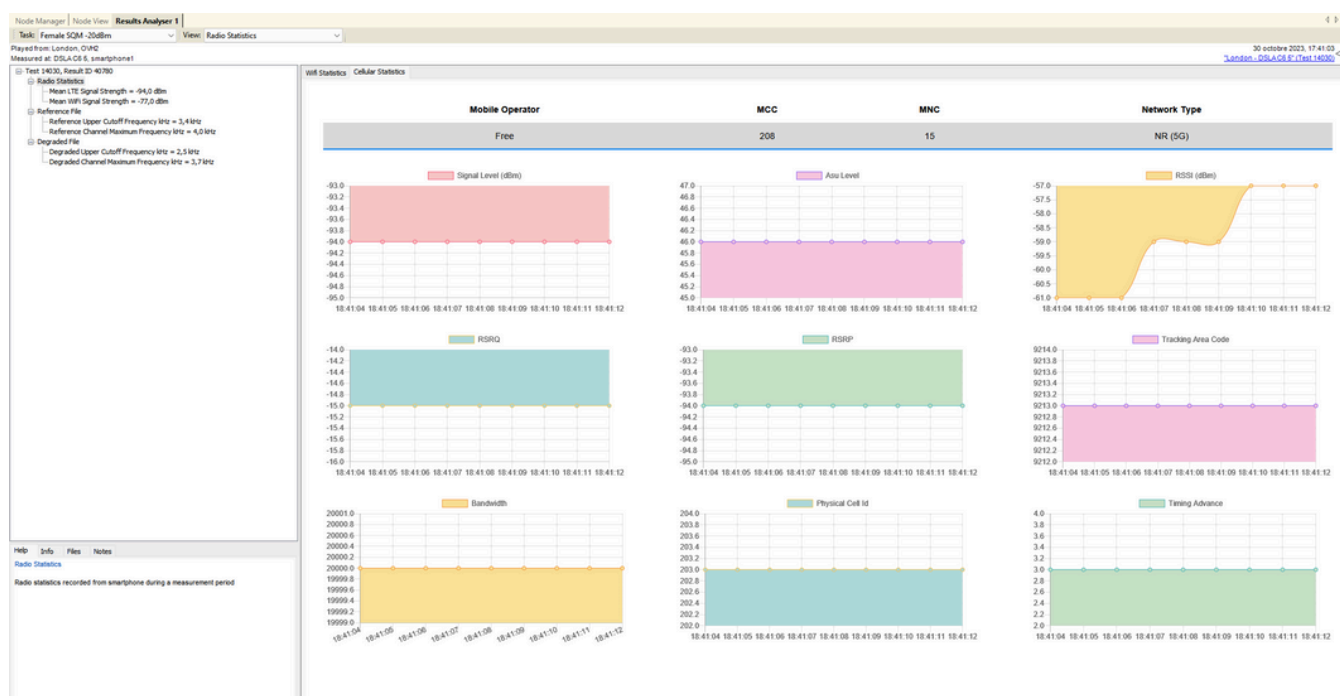
Get all mobile connection status and statistics during a test with MultiDSL and/or in Live.

New framework

Enabling easier development of new features.

Local UI

Monitor in live your wireless connectivity within the mobile.



Radio statistics collected from the mobile in a MultiDSL test

Wireless visibility

Global Stats^{*}

Bit rate and packet rate on Wifi interface and on Mobile interface

Wifi info^{*}

Link speed rx/tx, bssid, connection state, frequency, ip address, link speed max rx/tx, mac address, passpoint fqdn, passpoint pfqn, rssi, ssid, wifi standard

GSM^{*}

ARFCN, BERT, BSIC, CID, DBM, LAC, MCC, MNC, MNO, RSSI, TA

TDSCDMA^{*}

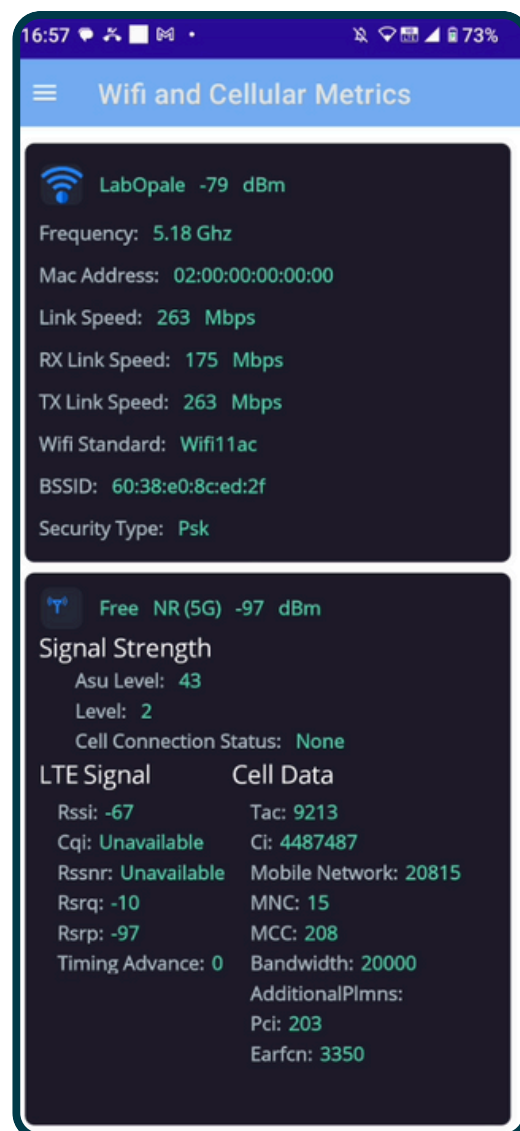
CID, CPID, LAC, MCC, MNC, MNO, RSCP, UARFCN

CDMA^{*}

BASE STATION ID, CDMADB, CDMAECIO, CDMALEVEL, EVDODBM, EVDOECIO, EVDOLEVEL, EVDOSNR, LATITUDE, LONGITUDE, NETWORKID, SYSTEMID

LTE^{*}

BANDS, BANDWIDTH, CI, CQI, EARFCN, MCC, MNC, MNO, PCI, RSRP, RSRQ, RSSI, RSSNR, TAC, TIMINGADVANCE



5G/NR^{*}

BANDS, CSIRSRP, CSIRSRQ, CSISINR, MCC, MNC, MNO, NCI, NRARFCN, PCI, SSRSRP, SSRSRQ, SSSINR, TAC

WCDMA^{*}

CID, ECNO, LAC, MCC, MNC, MNO, PSC, UARFCN

^{*}informations are provided by Android SDK , some may not be available on oldest Android version